

Keynote Conversation

The Pandemic & The Economy

Kimi Watkins-Tartt

Director, Alameda County Public Health Department

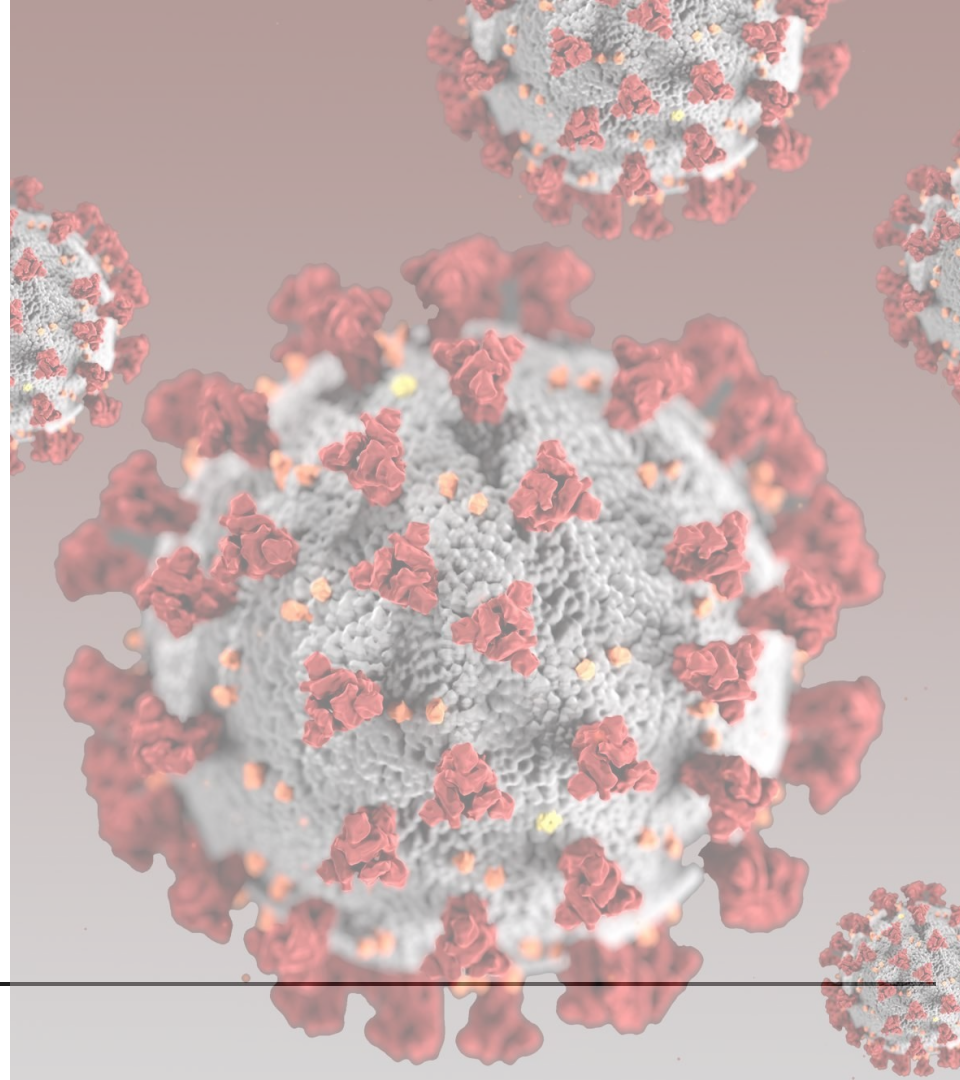
Pete Coletto

Finance Director, Alameda County Social Services Agency

Moderator: Deepa Chordiya
Outreach Manager, LIFE Elder Care

PANDEMIC IMPACT AND RESPONSE IN ALAMEDA COUNTY

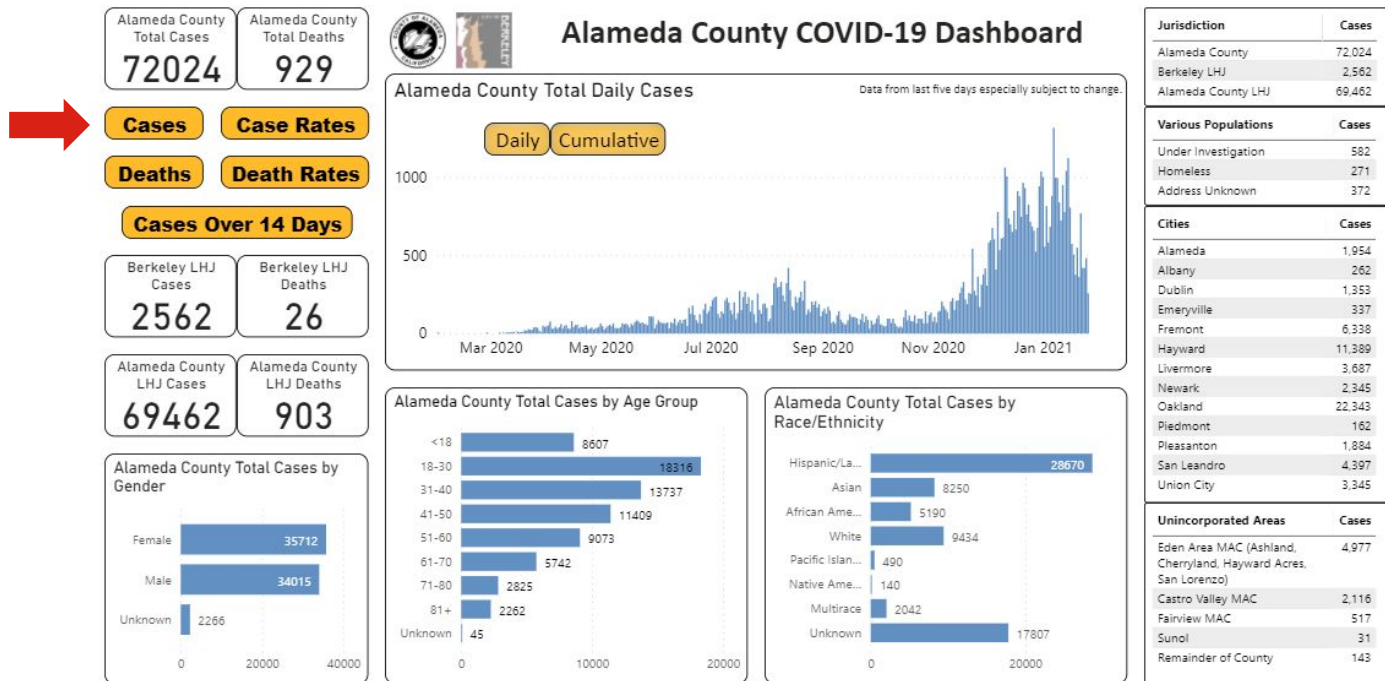
**KIMI WATKINS-TARTT
DIRECTOR
ALAMEDA COUNTY PUBLIC HEALTH
DEPARTMENT
JANUARY 29, 2021**



Cases *as of 1/28/21*

covid-19.acgov.org/data

By Gender, Race/Ethnicity, Age Group, Jurisdiction, and Over Time [Mobile version](#)

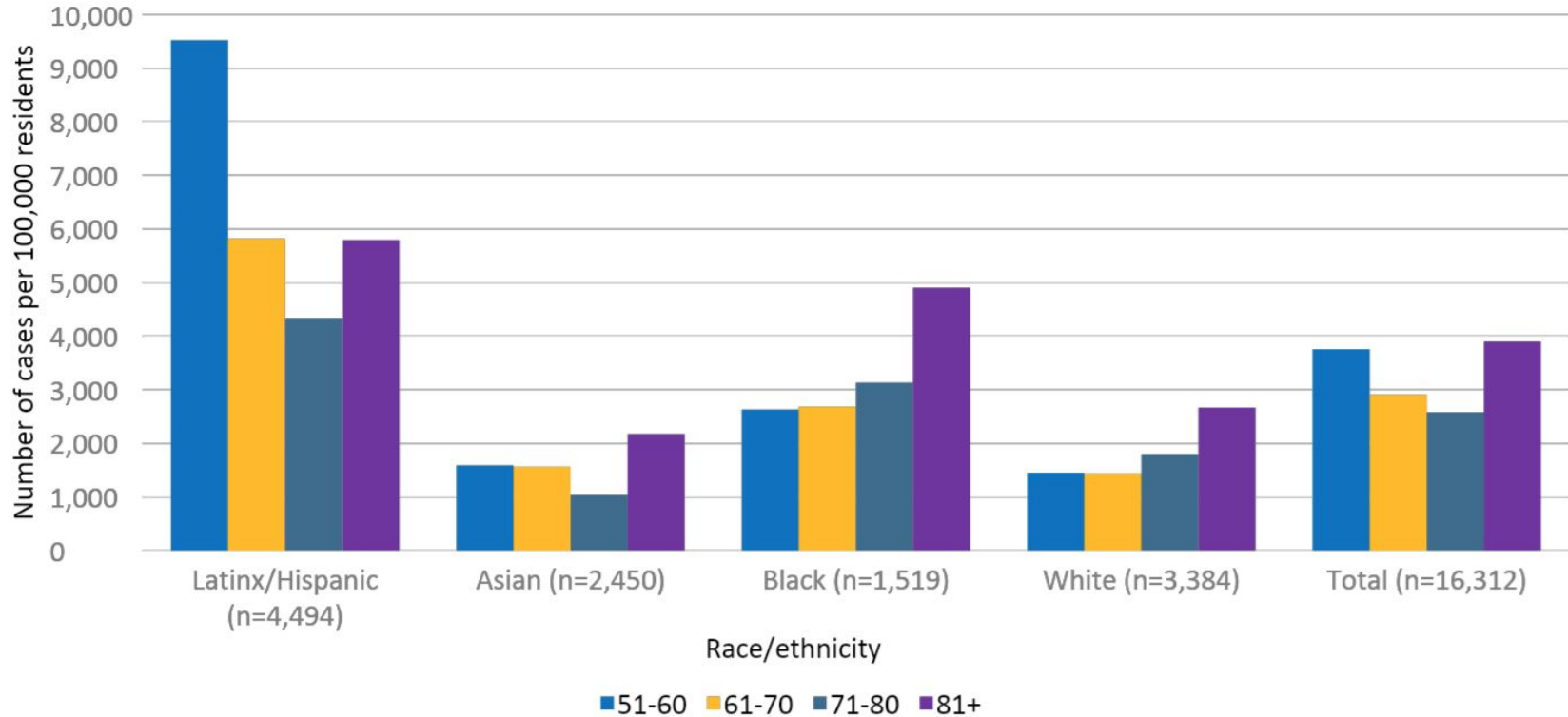


Notes and disclaimers: The City of Berkeley and Alameda County (minus Berkeley) are separate local health jurisdictions (LHJs). We are showing data for each separately and together. The numbers for the Alameda County LHJ and the Berkeley LHJ come from the state's communicable disease tracking database, CalREDIE. These data are updated daily, with cases sometimes reassigned to other LHJs and sometimes changed from a suspected to a confirmed case, so counts for a particular date in the past may change as information is updated in CalREDIE. Case dates reflect the date created in CalREDIE. The time lag between the date of death and the date of entry into CalREDIE has sometimes been one week; the date of death is what is reflected here, and so death counts

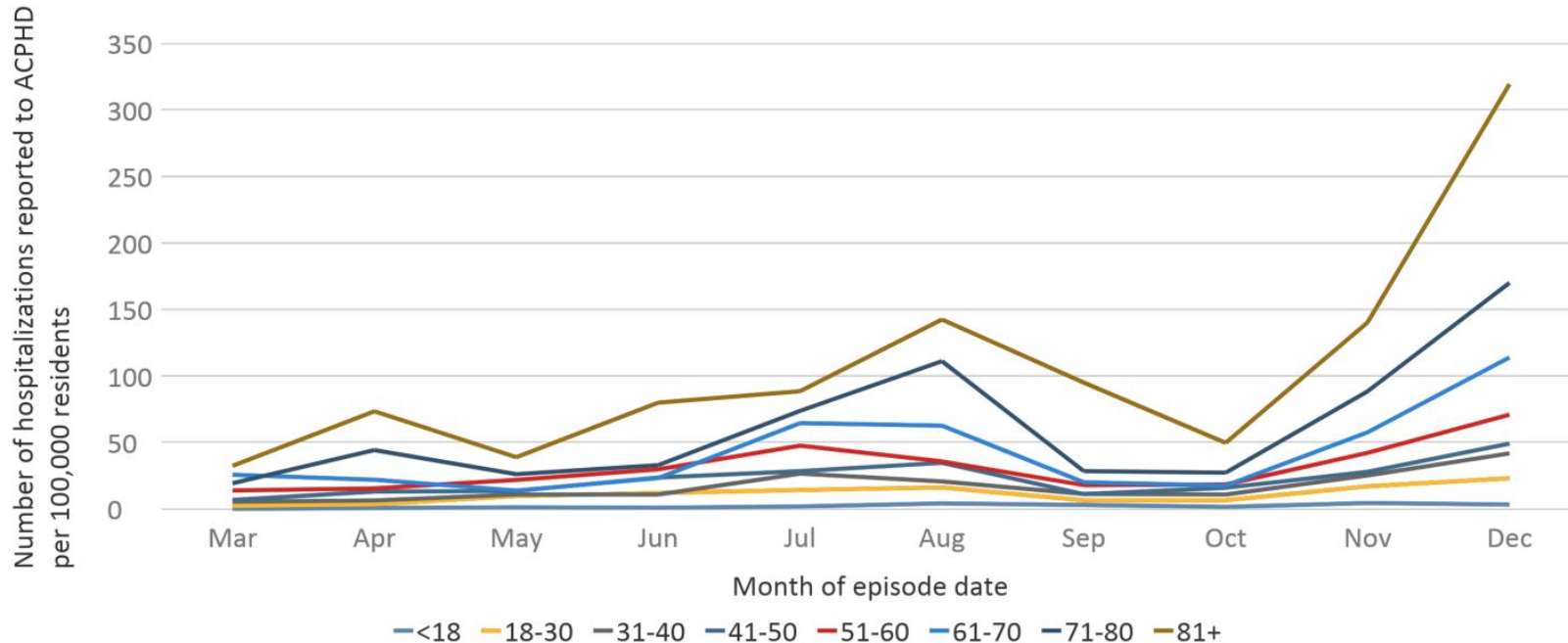


**ALAMEDA COUNTY HEALTH CARE SERVICES AGENCY
PUBLIC HEALTH DEPARTMENT**

Alameda County COVID-19 case rates, ages 51+



Alameda County COVID-19 hospitalizations reported to ACPHD, rates by age group



Sources: 1) CalREDIE download January 12, 2021; 2) preliminary CEIP hospitalizations report January 6, 2021

Note: Due to small numbers, rates are unstable for ages <18 in March – July and October, and for ages 18-30 in March and April.



Deaths *as of 1/28/21*

covid-19.acgov.org/data

Alameda County
Total Cases
72024

Alameda County
Total Deaths
929



Alameda County COVID-19 Dashboard

Cases

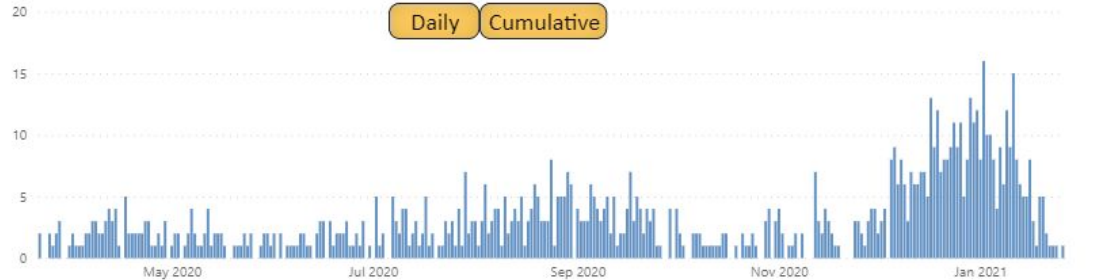
Case Rates

Deaths

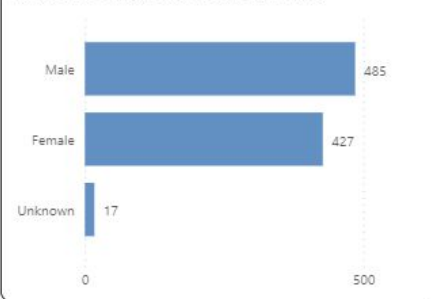
Death Rates

Cases Over 14 Days

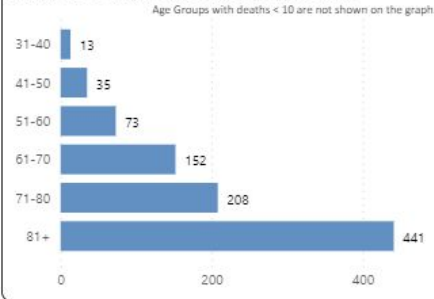
Alameda County Total Daily Deaths



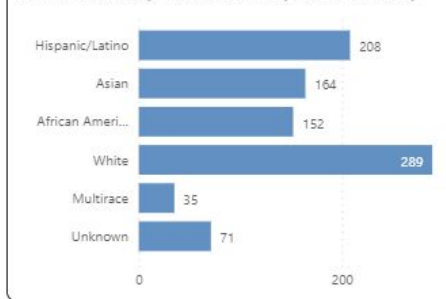
Alameda County Total Deaths by Gender



Alameda County Total Deaths by Age Group



Alameda County Total Deaths by Race/Ethnicity

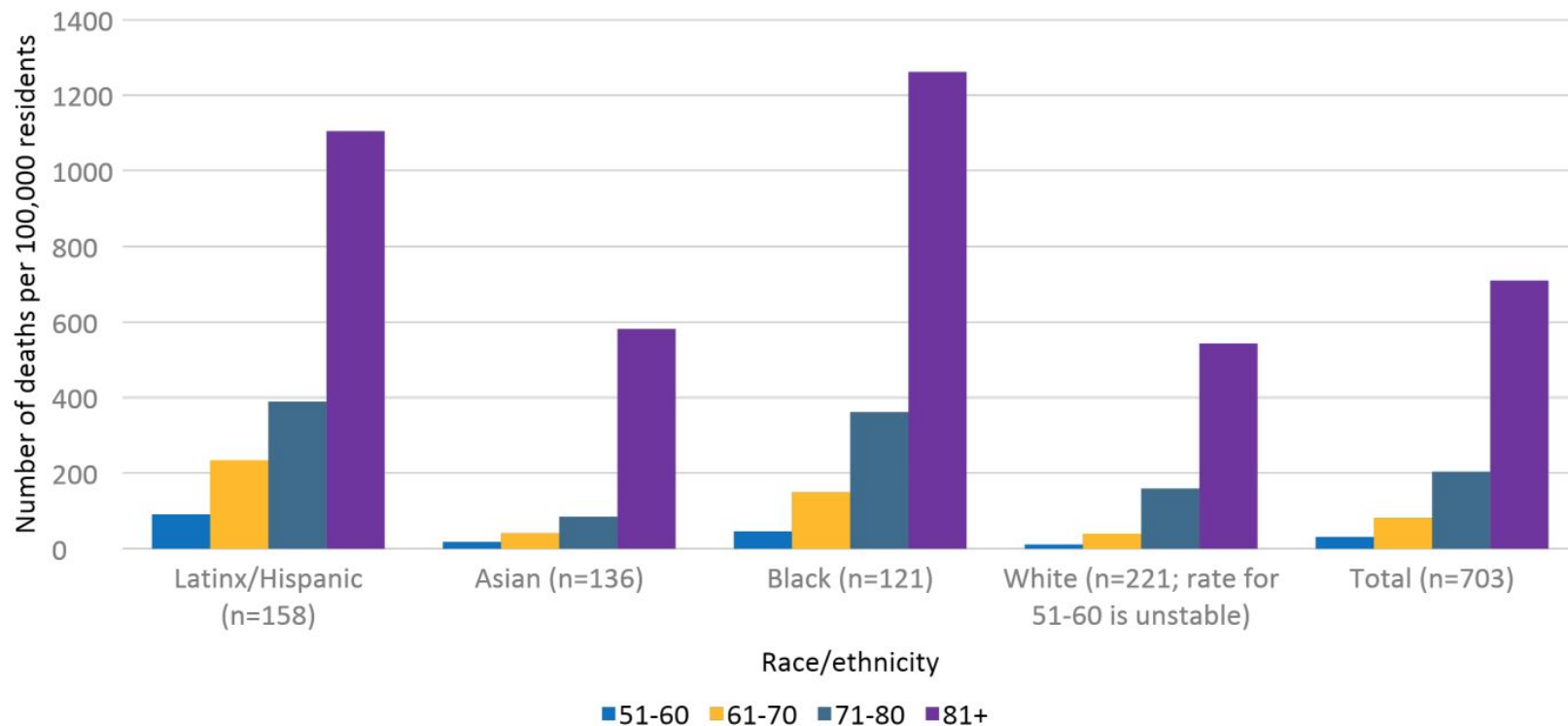


Notes and disclaimers: The City of Berkeley and Alameda County (minus Berkeley) are separate local health jurisdictions (LHJs). We are showing data for each separately and together. The numbers for the Alameda County LHJ and the Berkeley LHJ come from the state's communicable disease tracking database, CalREDIE. These data are updated daily, with cases sometimes reassigned to other LHJs and sometimes changed from a suspected to a confirmed case, so counts for a particular date in the past may change as information is updated in CalREDIE. Case dates reflect the date created in CalREDIE. The time lag between the date of death and the date of entry into CalREDIE has sometimes been one week; the date of death is what is reflected here, and so death counts



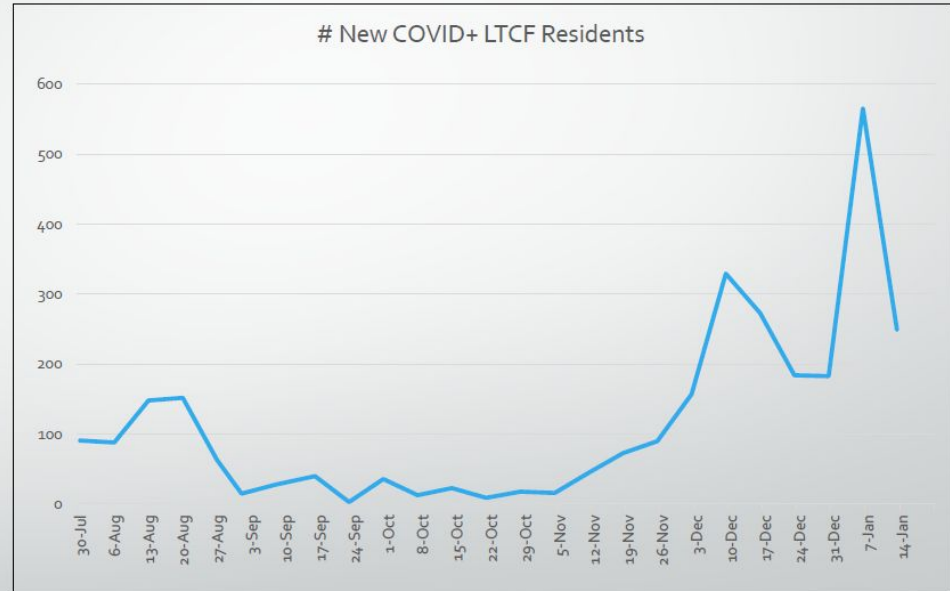
ALAMEDA COUNTY HEALTH CARE SERVICES AGENCY
PUBLIC HEALTH DEPARTMENT

Alameda County COVID-19 death rates, ages 51+



Long-Term Care Facilities Outbreak Data

LTCF Outbreak Data
Cumulative
Residents: 3,483 cases
Staff: 2,769 cases
Total: 6,252 cases
Hospitalized: 523
Deaths: 376
Outbreaks Total: 406
LTCFs with 2 outbreaks: 106
LTCFs with 3 outbreaks: 58



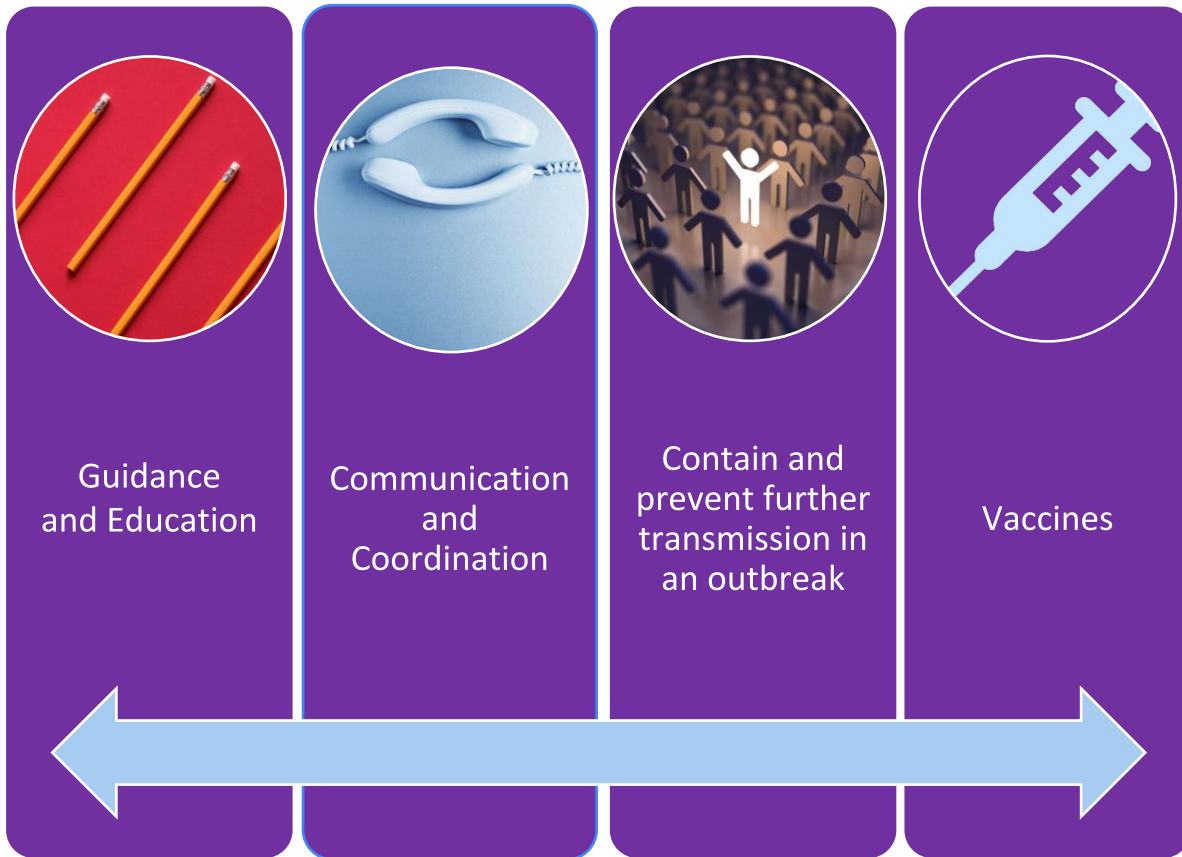
Characteristics of Alameda County Skilled Nursing Facilities and Residents, 2017*

- 47% of SNFs were part of multi-facility firms; 81% were for-profit
- There were 4106 residents in 5817 SNF beds

Female	58%		Average age	76 yrs
White	42%		Under age 65	22%
Black	27%		Supported by Medi-Cal	67%
Hispanic	9%		Supported by Medicare	12%

*2017 is the last year yet available from Brown University LTCFocus.org





Long-Term Care Facilities Task Force



Health Equity Team

MASK ON SAVE LIVES



If you need:
FREE MASKS, FOOD,
TESTING, SHELTER OPTIONS
OR OTHER SERVICES CALL + 510-353-3900

get more info:
covid-19.acgov.org

#Dare2BWell

ALAMEDA COUNTY HEALTH CARE SERVICES AGENCY



LET'S KEEP EACH OTHER SAFE

ALAMEDA COUNTY
HEALTH CARE
SERVICES AGENCY
@Dare2BWell



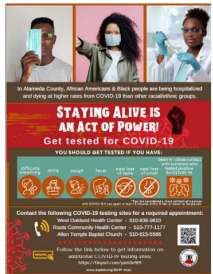
HAY QUE MANTENERNOS A SALVO



**TOGETHER
WE CAN STOP
THE SPREAD
OF COVID-19**



Expanded & Targeted Testing

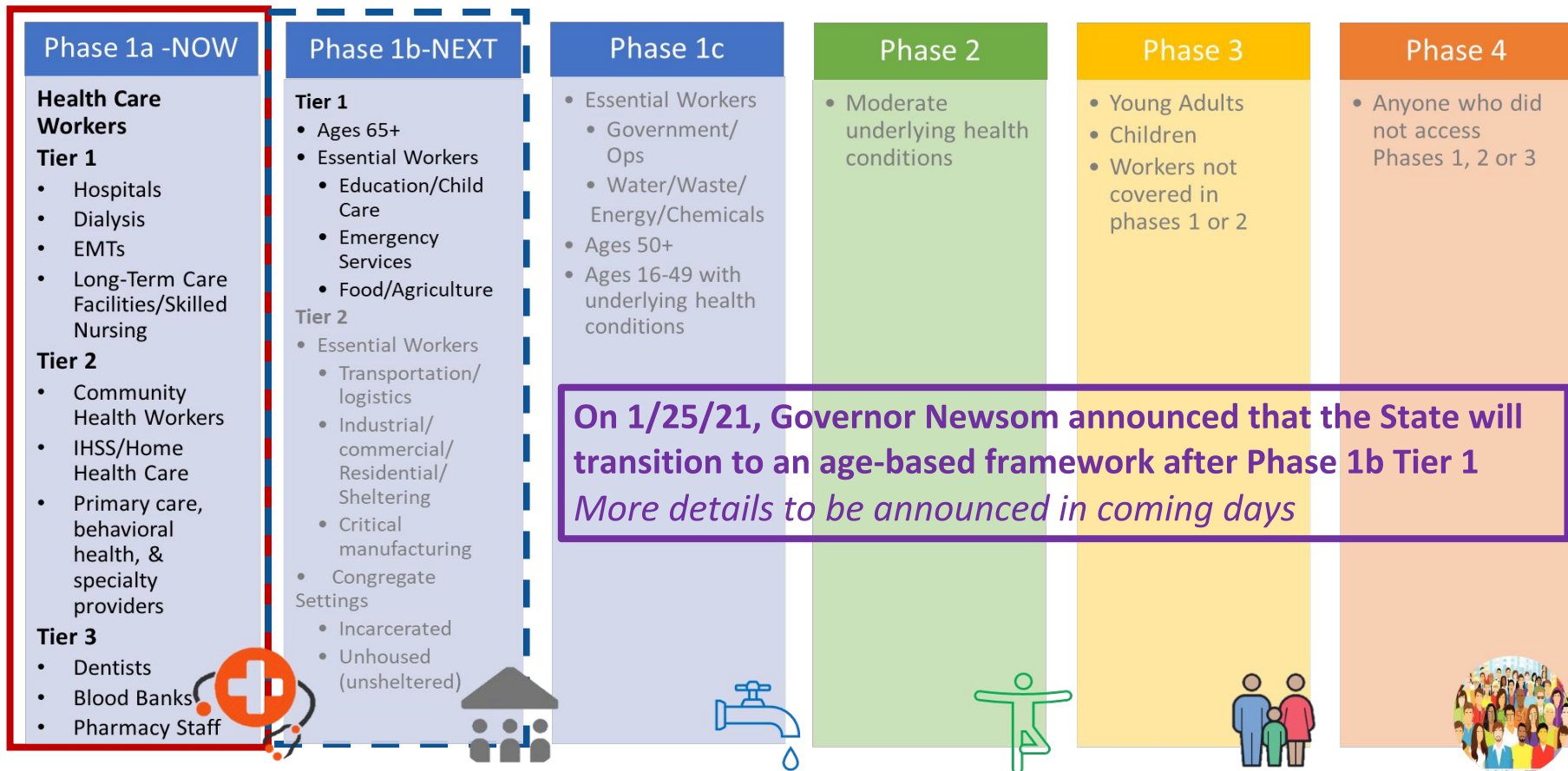


COVID-19 Testing Locations:
<http://www.acphd.org/2019-ncov/testing.aspx>



**ALAMEDA COUNTY HEALTH CARE SERVICES AGENCY
PUBLIC HEALTH DEPARTMENT**

Vaccine Prioritization Framework *as of 1/25/21*



Vaccine Distribution to Older Adults



Health care workers and high-risk settings

- LTCF & RCFE residents & staff
- Home Health Workers
- IHSS providers
- Adult Day Health Center staff
- Hospice providers



VACCINATION GUIDANCE & RESOURCES

General information about COVID-19 vaccine planning and administration



Alameda County Residents

[Get notified when it's your turn](#)



Employers

[Get notified when it's your turn](#)



Health Care Providers

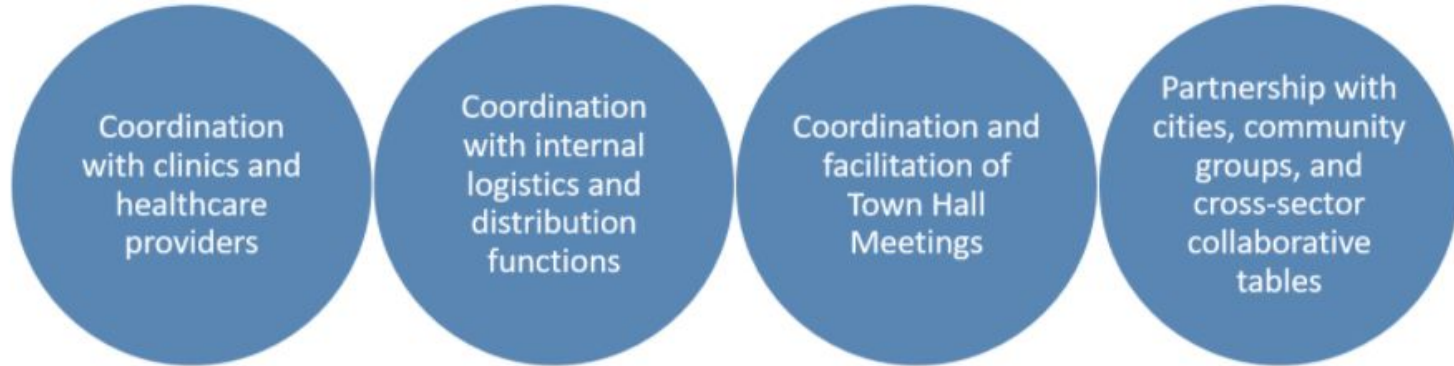
[Get notified when it's your turn](#)

covid-19.acgov.org/vaccines



Community Engagement

How We Integrate the Community Advisory Group (CAG) Across Vaccine Planning Efforts



covid-19.acgov.org/community-advisory-group



Thank you

Kimi Watkins-Tartt

Director, Alameda County Public Health Department

For Public Health Department information about COVID-19:

- Call (510) 268-2101
- Email ncov@acgov.org
- Visit covid-19.acgov.org



The Pandemic & The Economy

Pete Coletto

Finance Director

Alameda County Social Service Agency





Agenda

In this discussion we will cover:

- State of the Economy
- State Budget Update
- Older Adult Program Financing
- Pandemic Impacts
- Pending Factors





State of The Economy

The state of the economy drives both sides of our budget:

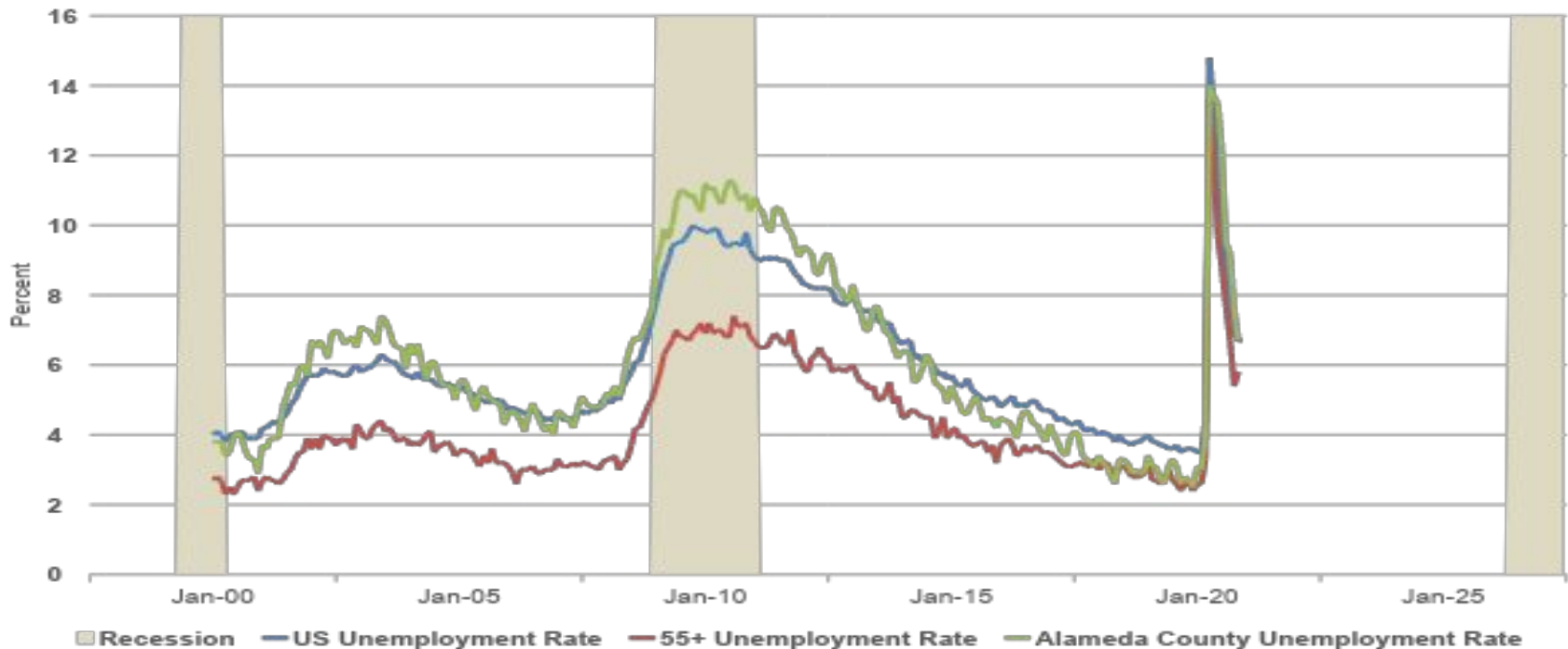
- **A weak economy increases demand for safety net services.**
- **Economic activity determines available revenues.**

The County's Fiscal Dilemma – We see revenues **decrease** during times when the demand for our services is **highest**. The County's budget must also be balanced.





National & Local Unemployment



Employment recovering, but still not back to pre-pandemic levels. Approximately 2.3 million fewer 55+ Americans are employed in December than were in February.



Uneven Economic Recovery

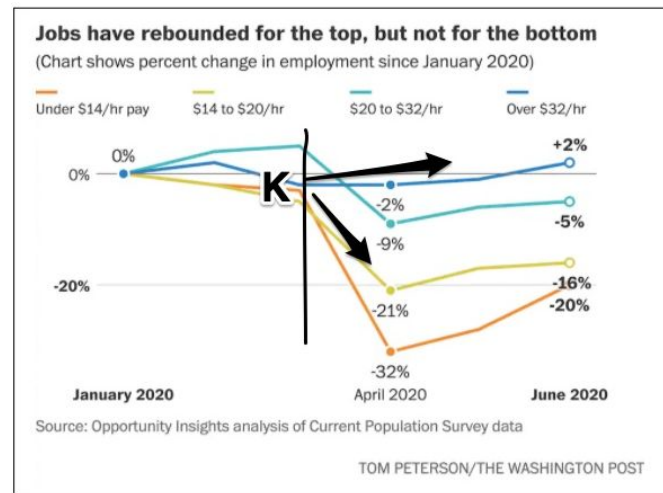
We officially entered a recession in March 2020 due to the impacts of the COVID-19 pandemic.

The 2 most common recoveries from a recession:

- V-Shaped – Quick bounce back to pre-recession growth trend (post-dotcom bubble recession)
- U-Shaped – Longer, slower recovery (Great Recession)

Many economists think we are in a K-Shaped recovery where employment has rebounded for the top, but not the bottom.

Key Takeaway – Strong demand for safety net services will continue absent a more even recovery.





State Budget Update

On January 8, 2021, Governor Newsom released his initial Proposed Budget.

Revenue recovery, fueled by stock market rally & taxes on wealthier residents who have avoided economic effects of pandemic fueling revenue, allows these key investments:

- Immediate Action Program for economic recovery, school reopening, and \$600 payments for those who make less than \$30k/year (\$5 billion in all).
- Extend eviction moratorium.
- Speed up COVID-19 vaccinations (\$372 million).
- Invest in housing including housing for vulnerable seniors (\$1.75 billion in all).
- CalAIM – transform Medi-Cal thru payment reform, prevention, care integration (\$1.1 billion).
- Creation of Office of Medicare Innovation & Integration to among other things support long-term care for vulnerable residents & help people age in place.
- Protect In-Home Supportive Services hours by restoring 7% cut through 2022.
- Create Senior Advisor on Aging, Disability & Alzheimer's & \$5 million placeholder funding to further implement the Master Plan on Aging.

Some considerations:

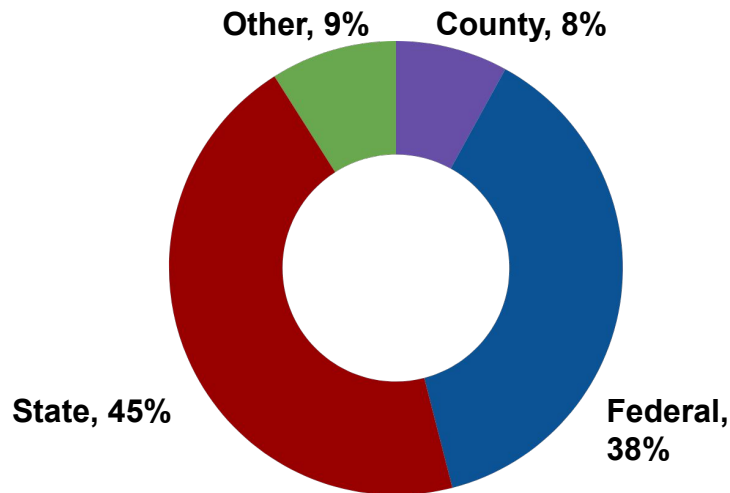
- State revenues are highly volatile – dependence on Personal Income Tax with a large portion of those revenues coming from highly volatile capital gains.
- To mitigate risk, Governor proposes to continue to pay down long-term debt and build reserves.



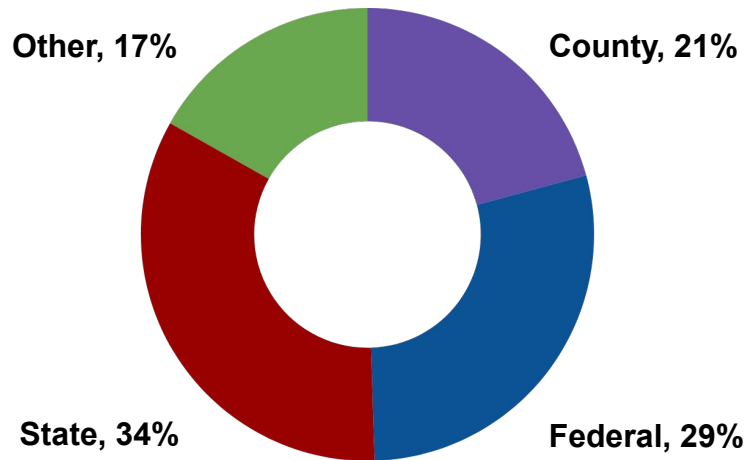


How We Are Financed

Social Services Agency Financing



Adult & Aging Services Financing



The County as a whole, and the Social Services Agency in particular, are highly dependent on State and Federal funding.





Local Pandemic Response

The County made new investments to address the public health and economic crisis. Some key investments administered by SSA in partnership with other County agencies:

Food Security

- Great Plates Delivered Program
- Countywide Emergency Food Vendor Pool
- Area Agency on Aging Service Augmentations
- Food Distribution Site Support
- Record Number of CalFRESH applications processed

Direct Financial Aid

- The Alameda County Responsibility to Community Health (ARCH) Program provided stipend payments to the following groups:
- COVID-19 positive adults without paid sick leave or unemployment insurance
 - Transition-age foster youth
 - In-Home Supportive Services recipients & providers
 - Recipients of Area Agency on Aging Services
 - Certain eligible CalWORKs families

Sheltering

- The County procured hotel rooms as a participant in Project RoomKey and Project HomeKey to provide housing for the homeless affected by the COVID-19 pandemic.
- SSA worked in partnership with the Health Care Services Agency to provide home care services to individuals in the hotels as needed.



Pending Factors

Short Term

- COVID-19 Impacts
- Additional Federal Stimulus
- Sales Tax Revenues / Realignment

Medium Term

- In-Home Supportive Services Financing
- Impact of Uneven Recovery on Caseloads

Long Term

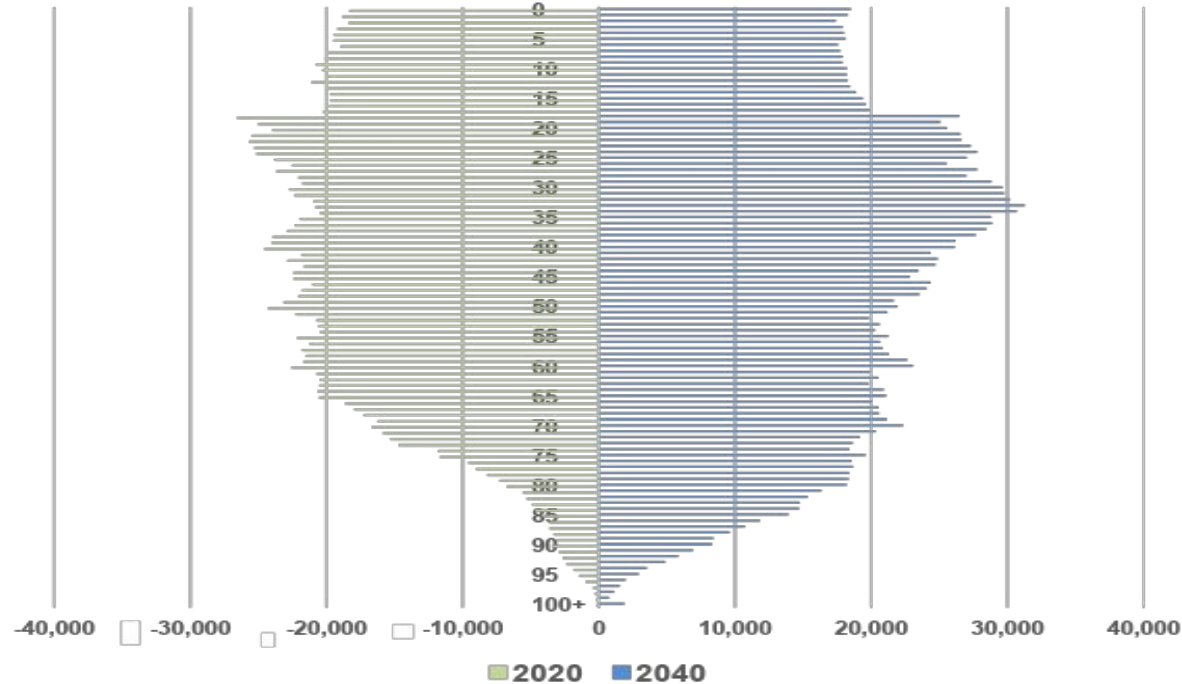
- Demographic Changes
- Master Plan for Aging Impacts





Alameda County Demographic Changes

Alameda County Population by Age: 2020 vs 2040 Forecast



The largest forecasted population growth is for the 70+ cohort – this will have an enormous impact on service delivery.





Key Dates

First Quarter 2021

- County Budget Kickoff
- Governor's Initial Budget Proposal
- President Biden takes office
- New Congress seated
- Additional Stimulus Negotiations

Second Quarter 2021

- County Early Budget Work Sessions
- County Budget Work Group Meetings
- May Revision to the Governor's Budget
- State Budget Hearings and Budget Adoption
- County Budget Hearings and Budget Adoption



Q&A

Type questions in the chat.