

**SENIOR SERVICES COALITION**  
OF ALAMEDA COUNTY

# MAKING THE DIFFERENCE

*Striving for Equity at the Intersection of Health, Housing  
and Aging in the Community*

---

**MAKING THE DIFFERENCE**

The background features a white central area with a black border. Surrounding this are decorative elements: a top-left corner with a light blue triangle and a background of fine, light blue diagonal lines; a top-right corner with a light blue triangle; a bottom-right corner with a light blue triangle and a background of fine, light blue diagonal lines; and a bottom-left corner with a dark grey triangle.

# A Picture of Alameda County

**Wendy Peterson** – Executive Director, Senior Services Coalition

MAKING THE DIFFERENCE

## Population Over Age 65 (Count)

County: Alameda ▼

Measurement Period: 2016-2020 ▼

County: Alameda 

# 231,186

people

Source: [American Community Survey](#) 

Measurement period: 2016-2020

Maintained by: Conduent Healthy Communities Institute

Last update: April 2022

Filter(s) for this location: [State: California](#)

REF: <https://www.healthyalamedacounty.org/>

# We are Aging

- Older adults are the fastest growing segment in Alameda County
- By 2030, older adults will make up 25% of the population
- Number of people with Alzheimer's Disease and Related Dementias (ADRD) is expected to triple among Alameda County residents over the age of 65, from 26,480 in 2020 to 89,792 in 2060

REF: <https://agefriendly.acgov.org/aging-in-ac/aging-in-ac-overview.page>

## Elder Index (Elderly Household Below Income Threshold)

County: Alameda ▼

Measurement Period: 2019-2020 ▼

County: Alameda 

# 36.2%

Source: [California Health Interview Survey](#) 

Measurement period: 2019-2020

Maintained by: Conduent Healthy Communities Institute

Last update: December 2021

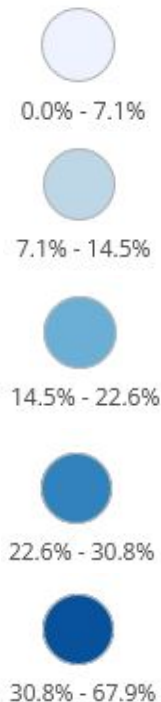
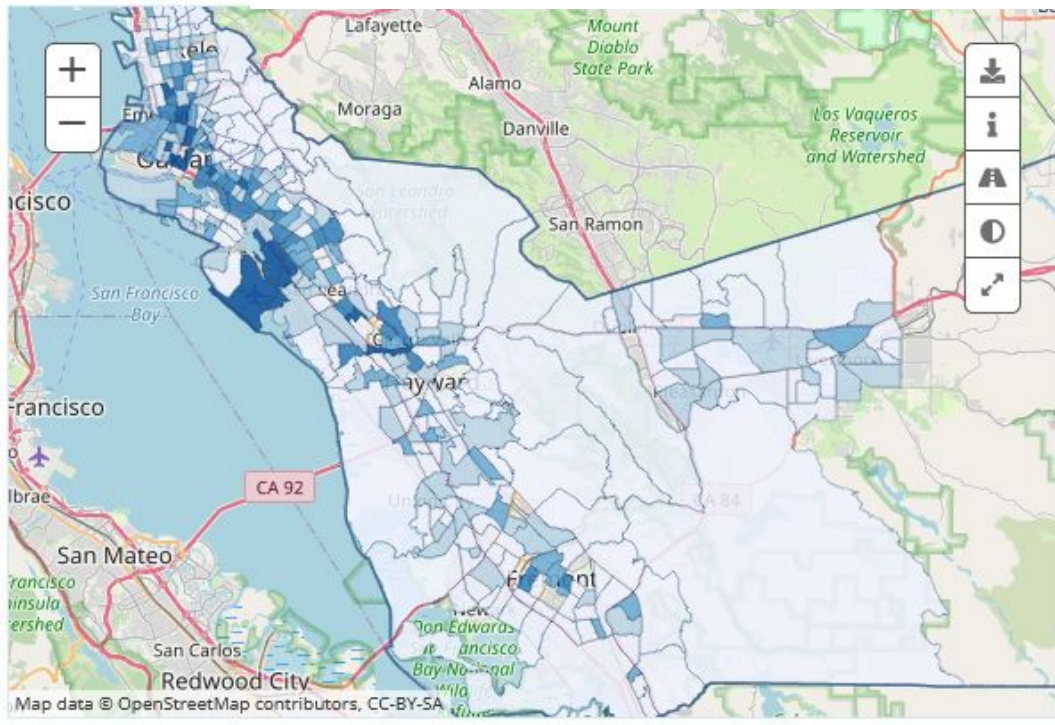
Filter(s) for this location: State: [California](#)

REF: <https://www.healthyalamedacounty.org/>

# People 65+ Living Below Poverty Level

Select a Census Tract ▼

Measurement Period: 2016-2020 ▼



**MAKING THE DIFFERENCE**

# Living Situations of Older Adults in Alameda County

- About 58% (134,000 people) are Renters (2019)
- About 30% (69,000 people) are Homeowners
- Over 10,000 people live in Residential Care Facilities for the Elderly (2022)
- About 4,060 people of all ages reside in Skilled Nursing Facilities
- Alameda County's 2022 Point in Time count indicated that 19% of the homeless population, or 1,852 people, are age 60 or older.

## People 65+ Living Alone (Count)

County: Alameda ▼

Measurement Period: 2016-2020 ▼

County: Alameda 

**52,635**

people

Source: [American Community Survey](#) 

Measurement period: 2016-2020

Maintained by: Conduent Healthy Communities Institute

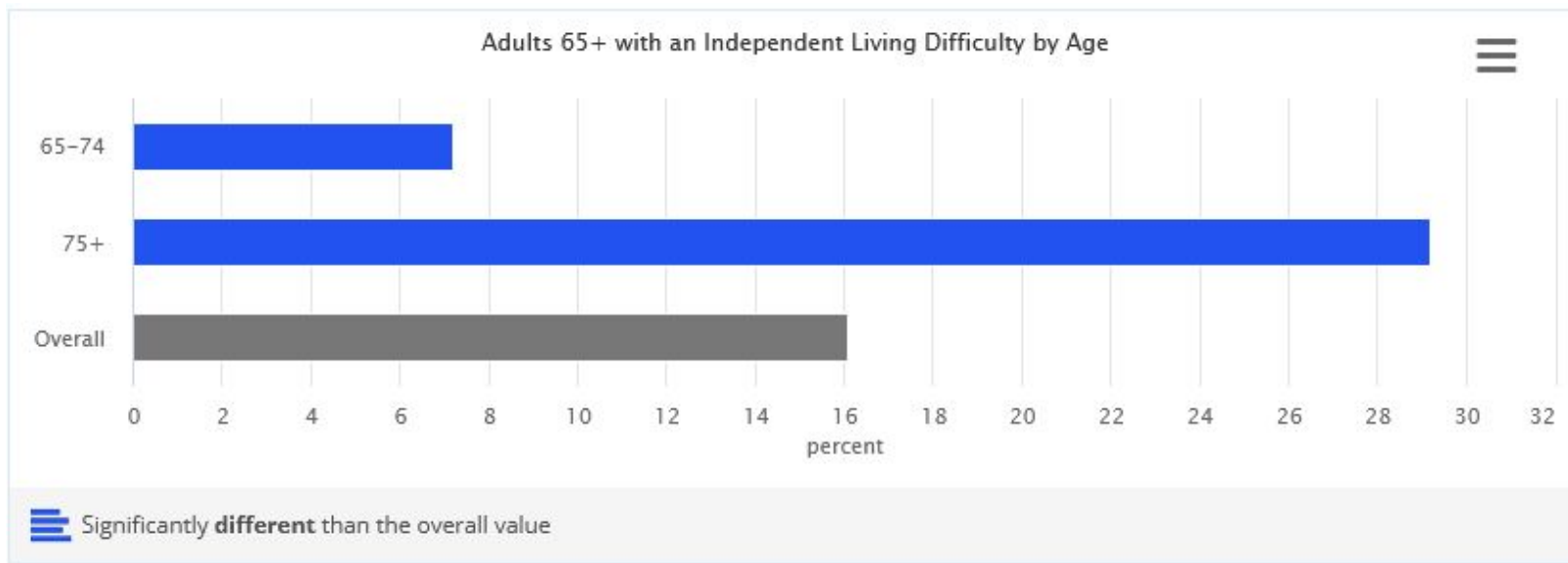
Last update: April 2022

Filter(s) for this location: State: [California](#)

## Adults 65+ with an Independent Living Difficulty

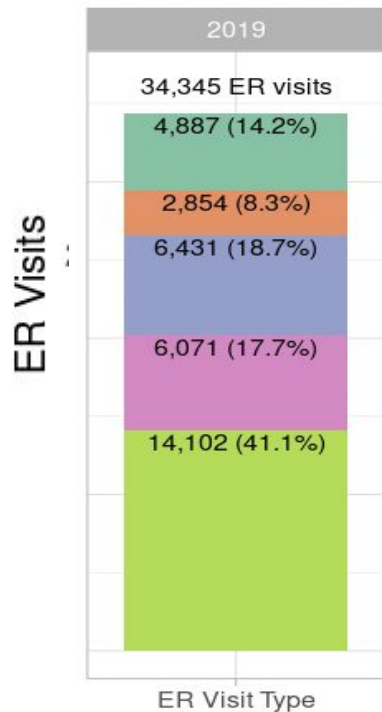
County: Alameda ▼

Measurement Period: 2016-2020 ▼





## County ER Visits Among Analyzed Patients in Medicare FFS & Age 65+, 2018-19



### ER Visit Type

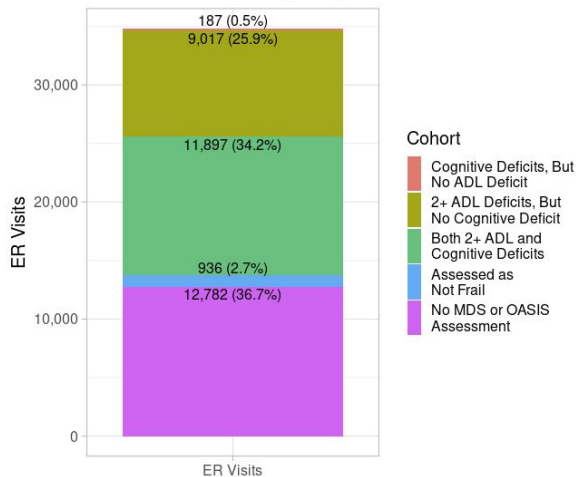
- Acute Need Avoidable with Primary Care Early in Episode
- Episode Preventable with Preventive Care
- ER Not Necessary
- Necessary
- Uncategorized

- Of the people age 65+ with Medicare Fee-for-Service who visited Emergency Departments in Alameda County in 2019, 14.2% were acute needs that could have been avoided with earlier primary care
- 8.3% were preventable if the person had received preventive care
- 18.7% were unnecessary
- 17.7% were necessary

REF: [https://eldercare.shinyapps.io/eldercaredata\\_shinyapps/](https://eldercare.shinyapps.io/eldercaredata_shinyapps/)

## Link Between ER Visits and Cognitive & Functional Deficits in Older Adults

Patient Type of 34,819 ER Visits  
in 2018 by Frailty Group  
Among 72,797 Analyzed Patients  
in Medicare FFS Over Age 65+, in Alameda



- Of the people age 65+ with Medicare Fee-for-Service who visited Emergency Departments, 34.2 % had Cognitive Deficits AND 2 or more ADL Deficits
- 25.9% had 2 or more ADL Deficits, but no cognitive deficits
- Only .5% Cognitive Deficits, But No ADL Deficit
- 2.7% - Assessed as not Frail
- 36.7% - were not assessed with the MDS or OASIS tools

REF: [https://eldercare.shinyapps.io/eldercaredata\\_shinyapps/](https://eldercare.shinyapps.io/eldercaredata_shinyapps/)

**SENIOR SERVICES COALITION  
OF ALAMEDA COUNTY**

