

Supportive Services Demonstration for Elderly Households in HUD-Assisted Multifamily Housing

Overview and Purpose of NOFA

- National Competition for \$15 million
- Applications due April 2016
- Submitted 12 applications and 3 selected

Purpose

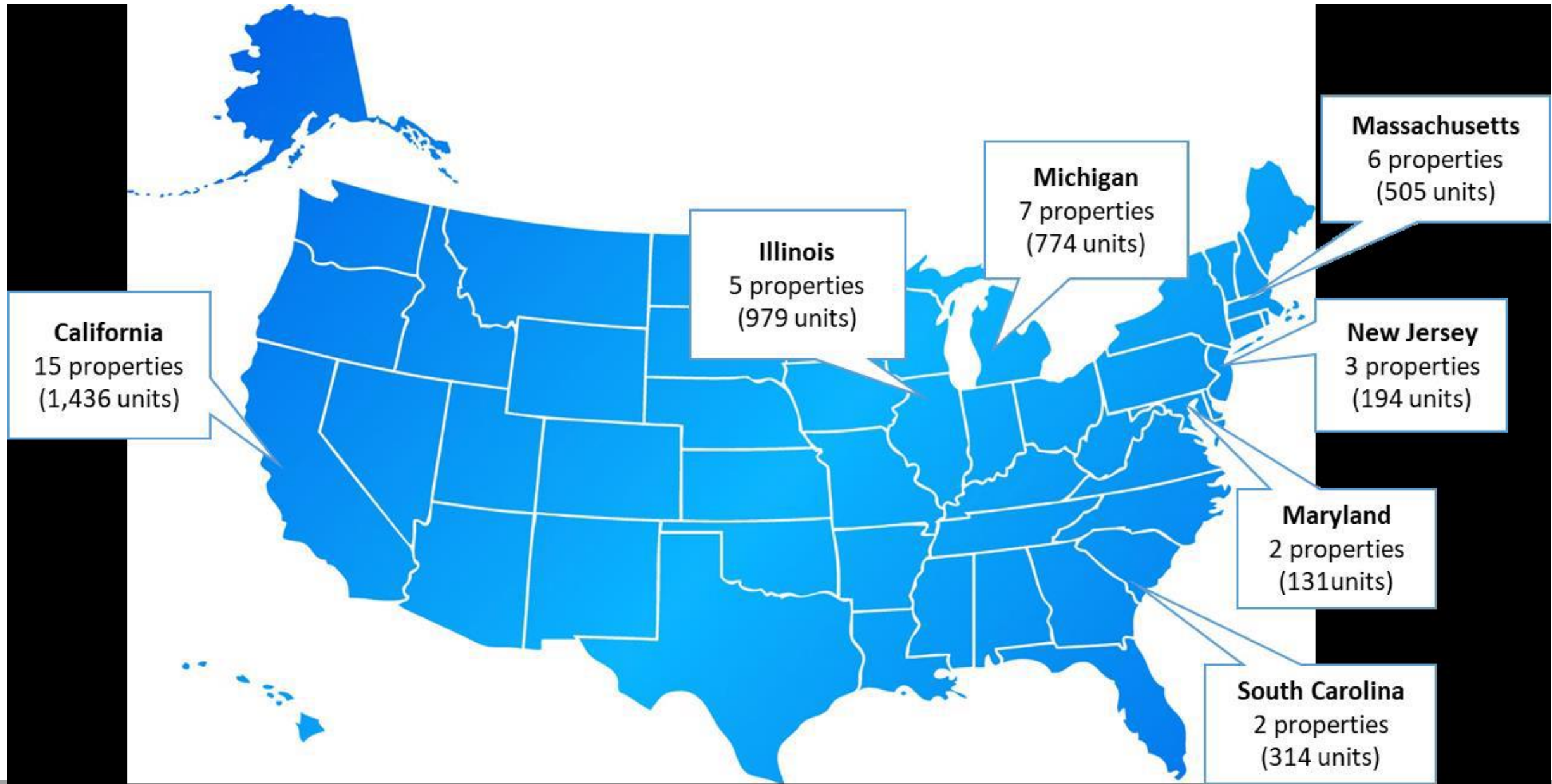
- To implement and evaluate a housing-based, person-centered, supportive services and wellness model designed to **facilitate successful aging in community** by:
 - helping residents proactively **address** their **health** and **social needs**
 - maximize their independence, well-being and quality of life



Criteria of Selection

- States with enough applications
- Lottery process
- **Must have at least 50 apartments**
- **Eligible resident-62 years and older**
- **Why we choose the ones we applied for**
- Enriched in Services





Who We Serve

Allen Temple I

77 Residents

- 5.2% 18-61
- 72.7% 62-80
- 22.1% 81-95
- 84% Hypertension
- 76% Arthritis
- 49% Diabetes
- 30% Mental Health



Allen Temple II

50 Residents

- 8% 18-61
- 64% 62-80
- 22% 81-95
- 6% 96 and over
- 82% Hypertension
- 26% Stroke
- 38% Diabetes
- 40% Mental Health

Existing Community Partners

- Mercy Brown Bag
- Episcopal Senior Communities/Produce Market
- Multipurpose Senior Services Program/Case Management
- Center for Elder's Independence
- City Slicker Farms
- PEERS-Peers Envisioning and Engaging in Recovery Services
- Kaiser
- Qigong-Shaolin Life
- Soul Injury Life Planning

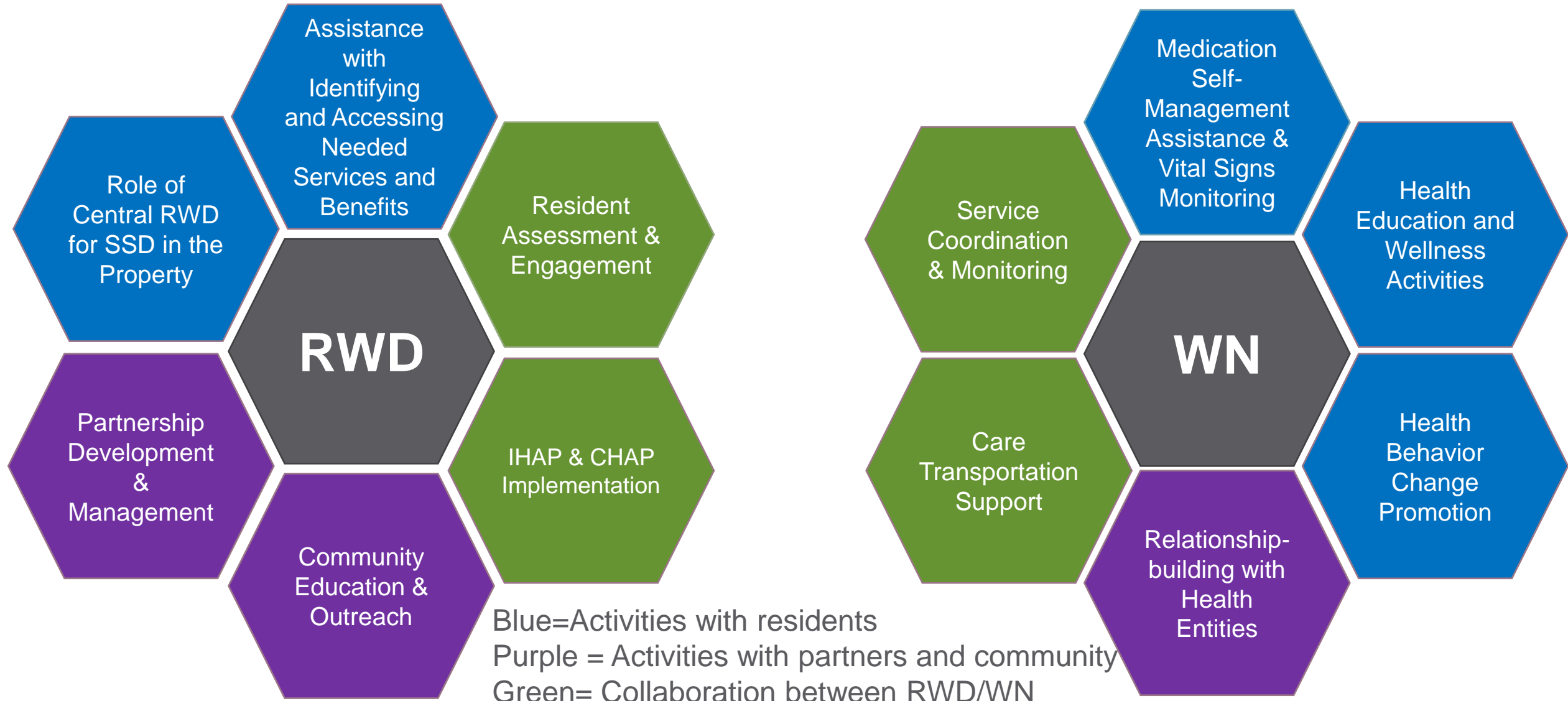


Position Overview and Expectations

- **The Wellness Nurse:** primarily role will include health monitoring, health education and coaching...and will not engage in direct clinical care
- **Resident Wellness Director** will make outreach efforts to engage ALL residents in a more proactive and comprehensive manner.



Key Components of Staff Roles



Successful Aging in Place



EMPOWERING
and
ENCOURAGING
RESIDENT
DRIVEN
ACTIVITIES

ACCESS TO
COMMUNITY
BASED SERVICES

HOLISTIC
HEALTH
ALLIANCES

AFFORDABLE,
SAFE AND
ACCESSIBLE

HEALTH CARE
NAVIGATIONS